

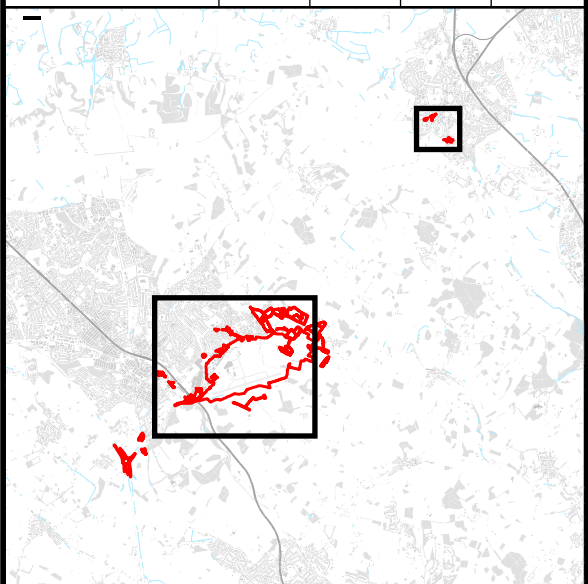
This drawing may contain mapping by permission of Ordnance Survey on behalf of HMSO © Crown Copyright and database rights 2019 Ordnance Survey 0100031673

All structure positions are indicative. The proposed works will be subject to detailed design development. The changes will be within limits of deviation specified in the Development Consent Order.

Legend

- Proposed Development Boundary
- Off-site Planting
- Site Subdivisions
- Former Railway
- De-icing Tanks
- Electrical Substation
- Fuel Tanks
- Historical Motor Works
- Historical Rifle Range
- Historical Sewage Farm/Tanks
- Historical Boiler Works
- Electricity Generating Station
- Burial Ground
- Potential Infilled Ground
- Cemetery
- Historical Dyeing and Bleaching Works
- Historical Abattoir
- Historical Iron Foundry
- Historical Laundry
- Historical Timber Yard
- Allotments
- Car Park
- Fire Station
- Fire Training Ground
- Former Landfill
- Fuel Depots
- Garage
- Made Ground / Earthwork Fill
- Miscellaneous Works
- Percival Works
- Petrol Station
- Print Works
- Run-Up Bay Area
- Scrapyard/Recycling Centre
- Trailer Park

First Issue	AB	RB	CS	10/12/21	P01
Revision History	Drawn	Checked	Approved	Date	Rev.



Luton Rising
 Our airport. Our community. Our planet.
 Luton Rising
 Hart House Business Centre
 Kimpton Road, Luton, LU2 0LA
 www.lutonrising.org.uk

**London Luton Airport
 Development Consent Order**

Drawing Title
**Figure 17.2
 Potential Sources
 of Contamination**

Purpose of issue SUITABLE FOR INFORMATION				Suitability S2	
Drawn AB	Checked RB	Approved CS	Date 10/12/21	Scale 1:15,000	Size A3

DCO Application Ref. TR020001	APFP Regulation	DCO Document Ref.
----------------------------------	-----------------	-------------------

Drawing Number LLADCO-3C-ARP-0000-DR-YE-0054	Revision P01
---	-----------------